

# O Come, O Come, Emmanuel

Latin, 9th Cent.

Trans. by John M. Neale, 1818-1866, alt.

Adapted by Thomas Helmore, 1811-1890

VERSES:

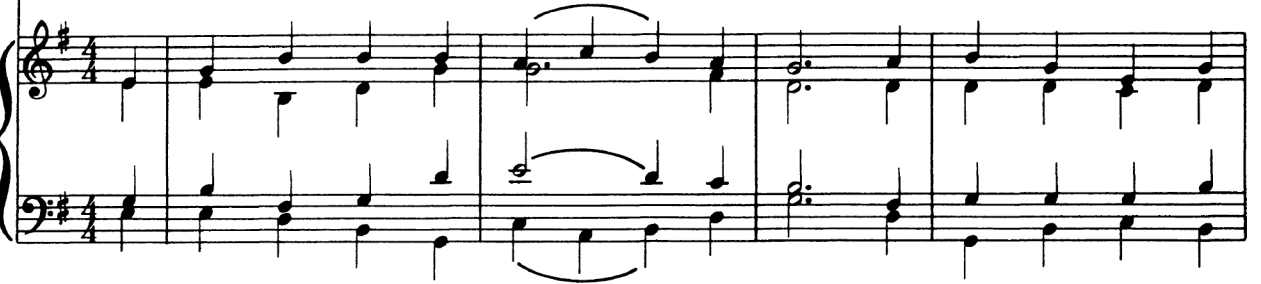
Em Bm G Am7 G D G D G

Melody

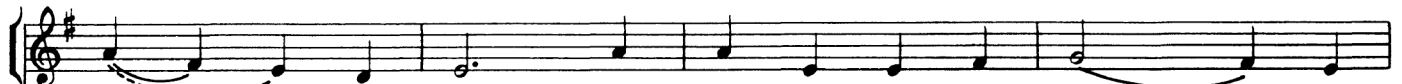


1. O come, O come, Em - man - u - el, And ran - som cap - tive  
 2. O come, thou Wis - dom, from on high, Who or - d'rest all things  
 3. O come, O come, thou Lord of might, Who to thy tribes on  
 4. O come, thou rod of Jes - se's stem, From ev - 'ry foe de -  
 5. O come, thou Key of Da - vid, come, And o - pen wide our  
 6. O come, thou Day-spring from on high, And cheer us by thy  
 7. O come, De - sire of na - tions, bind In one the hearts of

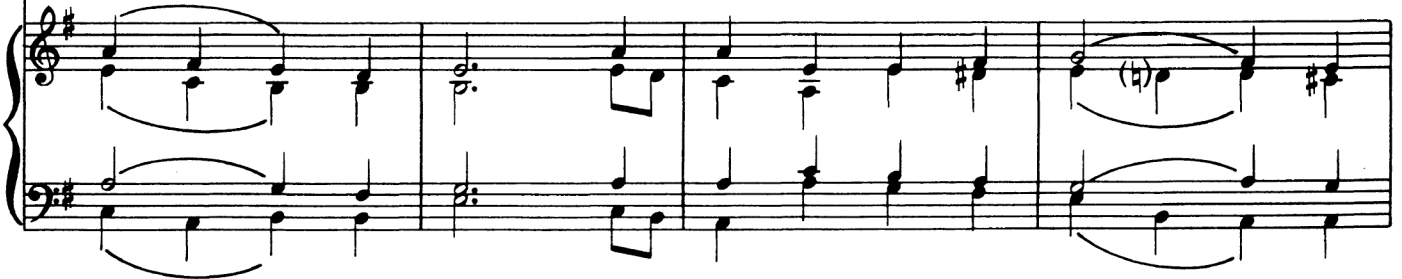
Organ



Am Em Bm Em Am Em B7 Em D A



1. Is - ra - el, That mourns in lone - ly ex - ile  
 2. might - i - ly; To us the path of know - ledge  
 3. Si - nai's height In an - cient times didst give the  
 4. liv - er them That trust thy might - y pow'r to  
 5. heav'n - ly home; Make safe the way that leads on  
 6. draw - ing nigh; Dis - perse the gloom - y clouds of  
 7. all hu - man - kind; Bid thou our sad di - vi - sions



D Em D Bm G Am7 G D G



1. here un - til the Son of God ap - pear.  
 2. show, And teach us in her ways to go.  
 3. law, In cloud, and maj - es - ty, and awe.  
 4. save, And give them vic - t'ry o'er the grave.  
 5. high, And close the path to mis - er - y.  
 6. night, And death's dark shad - ow put to flight.  
 7. cease, And be thy - self our Prince of Peace.



O COME, O COME, EMMANUEL, cont. (2)

REFRAIN:

D Em Bm G Am G D

Re - jice! Re - jice! Em - man - u -

The first system of the refrain features a vocal line and piano accompaniment. The vocal line consists of eighth notes with lyrics: "Re - jice! Re - jice! Em - man - u -". The piano accompaniment includes chords and melodic lines in both hands, with some notes beamed together and slurs over phrases.

Em D G C G Am Bm Em *Fine*

el shall come to thee, O Is - ra - el! *Fine*

The second system of the refrain continues the vocal line and piano accompaniment. The vocal line lyrics are: "el shall come to thee, O Is - ra - el!". The piano accompaniment concludes with a final chord and a double bar line, marked with "Fine".